

Guide to Vaccine Eligibility

(last updated: 11/02/2021)

When can I receive this dose?

What brands are available?

What are the eligibility requirements?

Individuals 5–11

1st Dose

Any time

Pfizer

Ages 5–11

2nd Dose

3 weeks (21 days) after 1st dose

Pfizer

Ages 5–11



Individuals 12–17

1st Dose

Any time

Pfizer

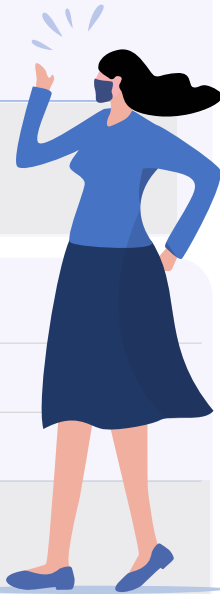
Ages 12–17

2nd Dose

3 weeks (21 days) after 1st dose

Pfizer

Ages 12–17



Individuals 18+

1st Dose

Any time

Pfizer

All Adults

Moderna

All Adults

J&J

All Adults

2nd dose

3 weeks (21 days) after 1st dose

Pfizer

All Adults

4 weeks (28 days) after 1st dose

Moderna

All Adults

3rd dose

4 weeks (28 days) after second dose

Pfizer

Adults who are moderately to severely immunocompromised*

Moderna

Booster

6 months after second dose

Pfizer (can get any booster)

Ages 65 and older

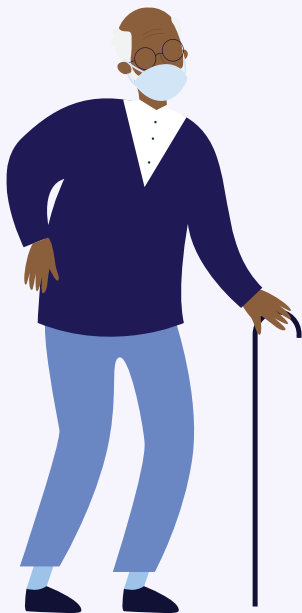
Moderna (can get any booster)

Ages 18 and older who have [underlying medical conditions](#)** , who work or live in [high-risk settings](#)*** , or who live in [long term care](#)****

2 months after first dose

J&J (can get any booster)

All Adults



All booster doses are interchangeable

* Immunocompromised = An individual with a weakened immune system due to certain health conditions. Note: Immunocompromised persons may receive a booster dose 6 months after their additional doses (third doses) of an mRNA vaccine.

** Underlying medical conditions = For example, cancer, diabetes, hypertension and other conditions that increase risk for severe COVID-19 illness.

*** High-risk settings = For example, healthcare workers, teachers, and others whose job puts them at risk of COVID-19 exposure.

**** Long term care = For example, individuals living in residential care, assisted living, nursing homes etc. that increase risk for COVID-19 exposure

Ready to get vaccinated?

Visit COVID19.nj.gov/vaccine

Additional questions?

The NJ COVID-19 Vaccine Call

Center is available at: **855-568-0545**

*Booster eligibility for individuals fully vaccinated with the *Moderna or Pfizer* COVID-19 vaccine

Adults are eligible

6 months

after your *Moderna or Pfizer* second dose



Individuals are eligible for boosters if

65+

OR

18+

You may choose from *Moderna, Pfizer or J&J* for your booster dose

- Who live in long term care settings, or
- Who have underlying medical conditions, or
- Who work or live in high-risk settings

*For full eligibility details, please visit <https://www.cdc.gov/media/releases/2021/p1021-covid-booster.html>

**For example, individuals living in residential care, assisted living, nursing homes etc. that increase risk for COVID-19 exposure

***For example healthcare workers, teachers and others whose job puts them at increased risk of exposure to COVID-19



For more information:

Call: **855-568-0545**

Visit: **covid19.nj.gov/vaccine**

***Booster eligibility for individuals vaccinated with the *Johnson & Johnson* COVID-19 vaccine**

Adults are eligible

2 months

after your *J&J vaccine*
(single dose)



Boosters
are recommended
for ages

18+

You may choose from
Moderna, Pfizer or J&J
for your booster dose

*For full eligibility details, please visit <https://www.cdc.gov/media/releases/2021/p1021-covid-booster.html>



For more information:
Call: **855-568-0545**
Visit: **covid19.nj.gov/vaccine**

Quick question for you...

Did you receive a second dose of the **Pfizer** or **Moderna** COVID-19 vaccine at least 6 months ago?

Yes? Awesome! My next question for you. Are you...

- 65 years and older, or
- Age 18+ and live in long term care settings, or
- Age 18+ and have underlying medical conditions, or
- Age 18+ and work or live in high-risk settings*



Yes? Thanks for sharing. That means...

YOU ARE ELIGIBLE FOR A BOOSTER

You may choose from Moderna, Pfizer or J&J for your booster dose

Visit [covid19.nj.gov/vaccine](https://www.covid19.nj.gov/vaccine), call 855-568-0545, or talk to your healthcare provider about scheduling an appointment

*For example healthcare workers, teachers and others whose job puts them at risk of severe COVID-19
For full eligibility details, please visit <https://www.cdc.gov/media/releases/2021/p1021-covid-boosters.html>

Quick question for you...

Did you receive your dose of the **J&J** COVID-19 vaccine at least 2 months ago?

Yes? Thanks for sharing.
That means...



YOU ARE ELIGIBLE FOR A BOOSTER

You may choose from Moderna, Pfizer or J&J for your booster dose

Visit [covid19.nj.gov/vaccine](https://www.covid19.nj.gov/vaccine), call 855-568-0545, or talk to your healthcare provider about scheduling an appointment

For full eligibility details, please visit <https://www.cdc.gov/media/releases/2021/p1021-covid-booster.html>

Now Available

Booster doses are now available to adults (18+) fully vaccinated with Moderna or Pfizer* who are at a higher risk of exposure to COVID-19 because of their job

Some examples include...



Healthcare workers



Educational staff



Manufacturing workers



Food and agriculture workers



Postal workers



Corrections workers



Grocery store workers



Public transit workers

You may choose from Moderna, Pfizer or J&J for your booster dose

***You must have received your second dose of the Pfizer or Moderna COVID-19 vaccine at least 6 months ago to receive a booster dose**

Visit covid19.nj.gov/vaccine or call **855-568-0545** to find a vaccination site near you

For full eligibility details, please visit <https://www.cdc.gov/media/releases/2021/p1021-covid-booster.html>

Now Available

Booster doses are now available to adults (18+), fully vaccinated with Moderna or Pfizer* who are at a higher risk of exposure to COVID-19 because of where they live or spend time

For example, if you regularly spend time or live in one of these settings, it is important to consider receiving a booster dose...

Healthcare facilities

**Correctional facilities
and county jails**

**Group homes or
residential treatment facilities**

Schools

Homeless shelters



You may choose from Moderna, Pfizer or J&J for your booster dose

***You must have received your second dose of the Pfizer or Moderna COVID-19 vaccine at least 6 months ago to receive a booster dose**

Visit covid19.nj.gov/vaccine or call
855-568-0545 to find a vaccination site near you

For full eligibility details, please visit <https://www.cdc.gov/media/releases/2021/p1021-covid-booster.html>

Now Available

Booster doses are now available to adults (18+) fully vaccinated with **Moderna or Pfizer* who are at a higher risk of COVID-19 due to underlying health conditions**

Underlying (or existing) health conditions include...

- Cancer
- Chronic (long-lasting) kidney disease (CKD)
- Chronic (long-lasting) lung disease
- Dementia
- Diabetes
- Down syndrome
- Heart conditions
- HIV infection
- Liver disease
- Overweight and obesity
- Pregnancy
- Sickle cell disease or thalassemia (low red blood cell count)
- Smoking (current or former)
- Organ or stem cell transplant
- Stroke or cerebrovascular disease (problems with blood vessels and blood supply to the brain)
- Substance use disorders
- Weakened immune system

You may choose from Moderna, Pfizer or J&J for your booster dose

***You must have received your second dose of the Pfizer or Moderna COVID-19 vaccine at least 6 months ago to receive a booster dose**

Visit covid19.nj.gov/vaccine or call **855-568-0545** to find a vaccination site near you

For full eligibility details, please visit <https://www.cdc.gov/media/releases/2021/p1021-covid-booster.html>